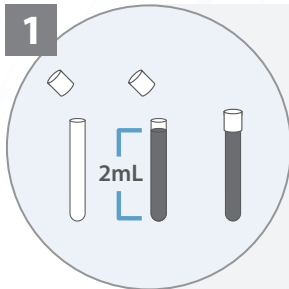


# Caris ChromoSeq™ Collection Kit Instructions



## Specimen Preparation and Packaging

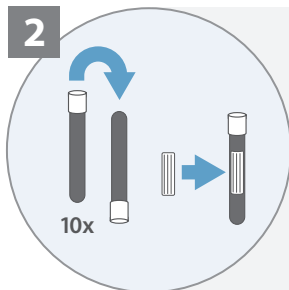


### Bone Marrow Aspirate:

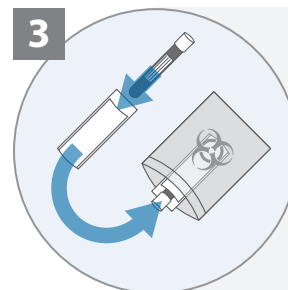
1. Aspirate bone marrow using standard medical practices.
2. **Collect a minimum 2mL of the bone marrow** in a syringe with a standard anticoagulant (not supplied).
3. Remove the cap of the PAXgene Bone Marrow RNA tube, provided in Caris shipper kit.
4. **Immediately transfer 2mL of bone marrow aspirate** from the syringe into the provided **PAXgene Bone Marrow RNA tube**.
5. **Securely recap the PAXgene tube.**

### Whole Blood:

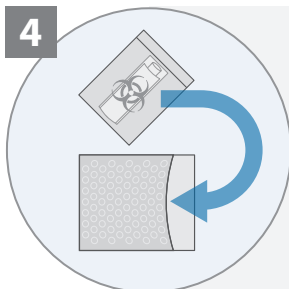
1. **Collect a minimum of 2 mL of whole blood** using either:
  - A syringe (not supplied), **or**
  - An EDTA tube (not supplied).
    - Immediately mix the sample with the anticoagulant.
    - Gently invert the EDTA tube 10 times.
2. **Immediately transfer 2mL of whole blood** into the provided **PAXgene Bone Marrow RNA tube** from the Caris collection kit:
  - Remove the cap from the PAXgene Bone Marrow RNA tube.
  - Using one of the following methods:
3. Transfer 2mL of whole blood from the EDTA tube using a pipette, **or**
4. Transfer 2mL of whole blood directly from the syringe.
5. **Securely recap the PAXgene tube.**



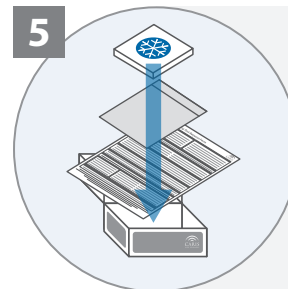
1. Gently invert tube 10x immediately after sample collection. **Do not shake.**
2. Place the label on the tube with two complete patient identifiers (Name and Date of Birth) and Date of Collection.



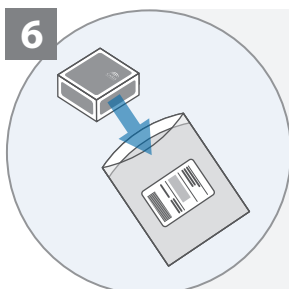
1. Place the tube into the white absorbent sleeve.
2. Place the sample with the white absorbent sleeve into the biohazard bag.



1. Place the biohazard bag into the silver pouch.



1. Place the Test Request Form, pathology report, insurance information, etc. into the box if it was not electronically sent.
2. Place the silver pouch into the shipping box.
3. Place the FROZEN cold pack on top of the silver pouch in the shipping box and close.



1. Place box inside the FedEx Clinical Pak and seal.
2. Arrange for FedEx overnight pickup of the specimen.

### Specimen Stability:

**Up to 3 days at room temperature (15–25°C/59–77°F)**

**Up to 5 days at 2–8°C/36–46°F**

**Samples should be shipped immediately after collection to ensure arrival within 24 hours.**

